



# Wireless Telecom Drafting Services



## Executive Summary

Cad Designers has been in business since 1999. We have worked as a consultant to many wireless engineering companies involving a wide range of projects in the Wireless Industry. Drawings are produced to the standards specified by our clients. We have completed over 20,000 Wireless Telecom drawings across the country. This includes Lease Exhibits, Raw Land Drawings, Collocations, Site Modifications, Monopoles, Lattice Towers, Guyed Towers, Rooftops, and Water Tanks, etc. Our goal is not only to meet, but always exceed your expectations.

## Philosophy

Our Philosophy is simple: Customer, Time Management and Quality Assurance. Our Customer is the most important. We strive to communicate and provide our customer what they need when they need it. We meet the exacting deadlines that the Telecom industry expects. We charge a flat fee for each service. We have the ability to meet the fast pace required for wireless telecommunication deliverables. For most projects we have a (5) business day guarantee. We have a (1) one business day guarantee on all redline deliverables. All work is completed by our team from our office in Raleigh, North Carolina. As part of our Quality Assurance program, every drawing is reviewed and checked to make sure it matches the template provided by our clients. It is our goal to be a leader in the Wireless Telecom Drawing/Drafting field. We feel that with our Customer, Time Management and Quality Assurance Philosophy, we can meet or exceed your expectations. It is our goal to give you a final product that meets your objectives on a fast-paced timeline.

## Contracting CAD Services

Cad Designers has become one of the leading wireless telecom Cad drafting service companies by providing dependable, professional services at a competitive price. In today's economic climate, contracting your drafting needs is smart business. While many of our larger clients utilize Cad Designers as an overflow solution, our smaller clients tend to use Cad Designers for all of their drafting needs. Outsourcing your drafting to Cad Designers can save your company money by not having to direct hire additional staff at times of economic uncertainty. When the need arises, we can help you complete your project without adding any long term overhead costs.

## Cad Designers Company Information

<b>Company Name:</b>	Cad Designers, Inc.
<b>North Carolina Address:</b>	Cad Designers, Inc. PO Box 91113, Raleigh, NC 27675
<b>Contact:</b>	Charlie Seymour, Owner
<b>Phone:</b>	919-696-5476
<b>Office Phone:</b>	919-457-9184
<b>Email:</b>	<a href="mailto:CharlieSeymour@Cad-Designers.com">CharlieSeymour@Cad-Designers.com</a>

# **Cad Designers Wireless Telecom Work Summary**

**Cad Designers has completed over 20,000 Wireless Telecom drawings**

- Lease Exhibits
  - Construction Drawings
  - Site Modifications
  - Structural Mods
  - Generator Add
  - Collocations
  - Monopoles
  - Lattice Towers
  - Guyed Towers
  - Rooftops
  - Water Tanks
  - Small Cell/Macro Cell Tower
- T-Mobile: L700, L600, Overlay, Anchor and Generator Add Drawings
  - AT&T: LTE 2C Upgrades, 3C Upgrades and LTE 5G Upgrades.
  - Verizon: ATC Macro Sites, PCD Mods.
  - Sprint: NBS (New Build Sites), Sprint Retain sites for T-Mobile.
  - 5 Boroughs of New York City, FDNY, DOB, DOB PAA, and LPC

Drawings are produced to the standards specified by our clients. Our goal is not only to meet, but always exceed your expectations.

We meet the exacting deadlines that the Telecom industry expects. We charge a flat fee for each service which includes redlines. We have the ability to meet the fast pace required for wireless telecommunication deliverables.

We take pride in our QA/QC program. We ensure that each project is thoroughly reviewed and correct prior to being delivered to our clients. It is our goal to minimize revisions. This can be done by properly preparing before each project begins. We have an initial kickoff with all of our clients so we may completely understand their goals, objectives and preferred drawing formats. As we complete a few projects for our clients, the revisions are reduced to a minimum. We provide a next business day turnaround for all redlines. It is our goal to give you a final product that meets your objectives on a fast paced timeline.

## **Our Team**

### **Charlie Seymour, President**

Charlie has extensive Drafting and Design experience. Charlie graduated from North Carolina State University with a BS in the Physical Mathematics/Sciences with a concentration in Business Management in December 1992. Charlie has worked for several Engineering Firms in the Carolinas and has extensive knowledge in Wireless Telecom, AV and Security, Electrical/Mechanical, Environmental, Manufacturing and Structural Drafting and Design. Charlie leads the QA/QC program to ensure each client receives a quality product, in a timely manner.

### **Chris, Senior Cad Designer**

Chris has worked in the Environmental and Manufacturing Industries his entire career. Chris graduated from The University of Rochester with a BS in Geomechanics (Geology/Mechanical Engineering) in May of 1989. Chris has worked for several Engineering Consulting Firms along the East Coast and has extensive knowledge in Wireless Telecom, Environmental, and Manufacturing Drafting and Design. Chris has OSHA 40-Hour Hazardous Waste (HAZWOPER) Training Certification and has taken the OSHA 8-Hour Supervisor Course.

### **Larry, Senior Cad Designer**

Larry has worked in the Manufacturing and Environmental Industry his entire career. Larry graduated from Florence-Darlington Technical College with a A.S. Degree in Drafting and Design. Larry has worked for several Engineering Consulting and Manufacturing Firms in North and South Carolina. Larry has extensive knowledge and experience in Mechanical and Structural Drafting.

### **Schafer, Cad Designer**

Schafer has Cad Drafting experience in Wireless Telecom, AV and Security and Environmental Drafting. Schafer helps with the completion of redlines and with the QA/QC program. Schafer has MS Office Certification

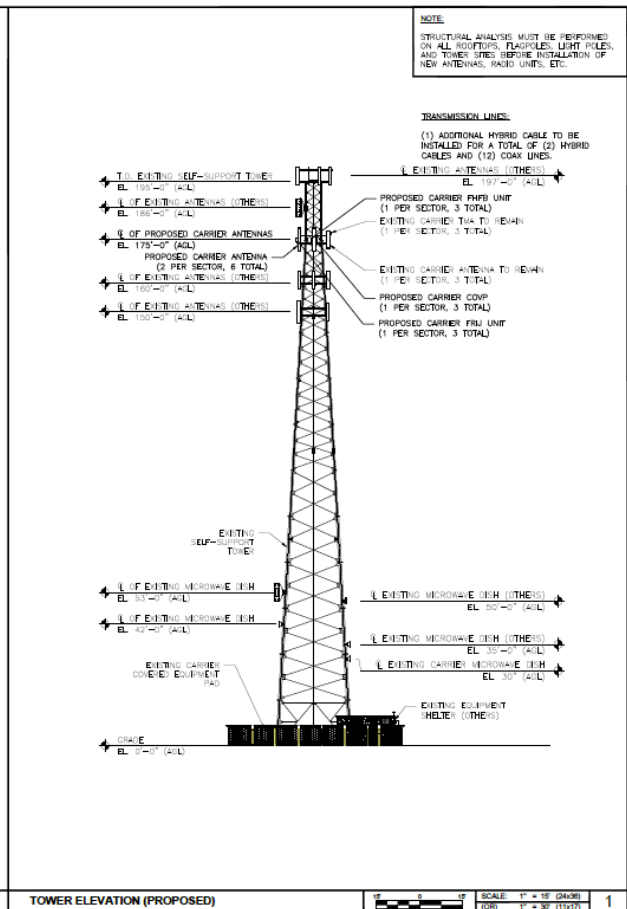
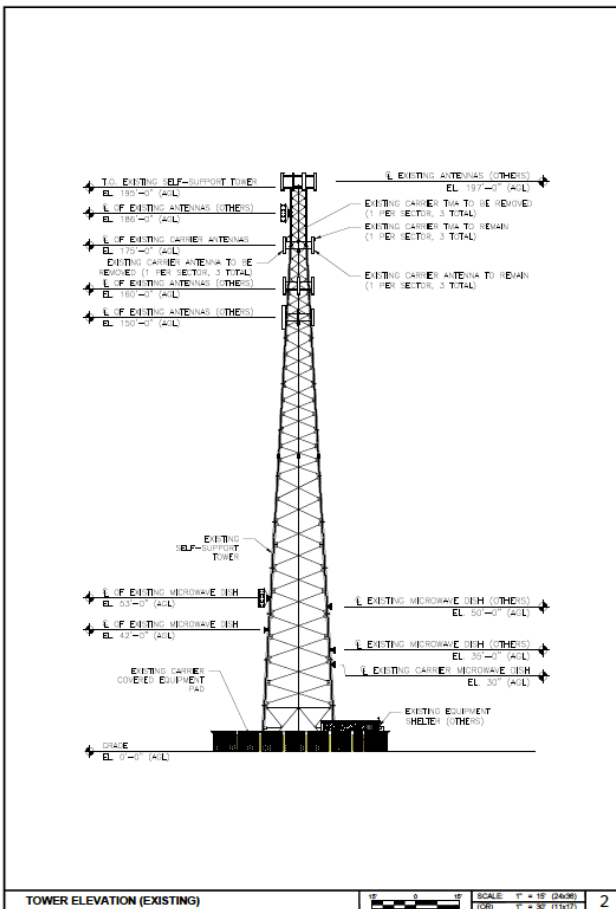
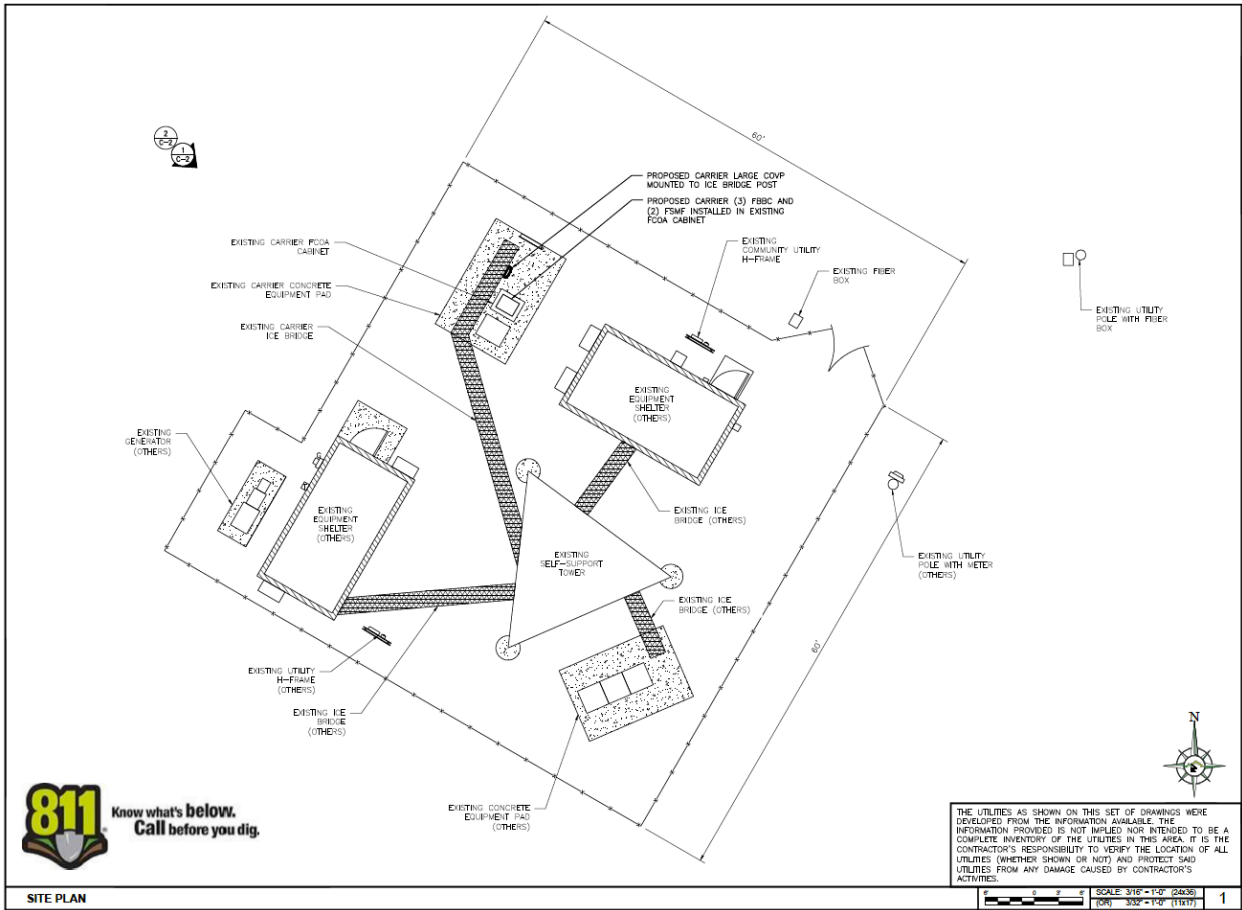
### **Mitchell, Cad Drafter**

Mitchell has Cad Drafting experience in Wireless Telecom, Manufacturing and Environmental Drafting. Mitchell has MS Office Certification and helps with redlines and setting up templates for the team.

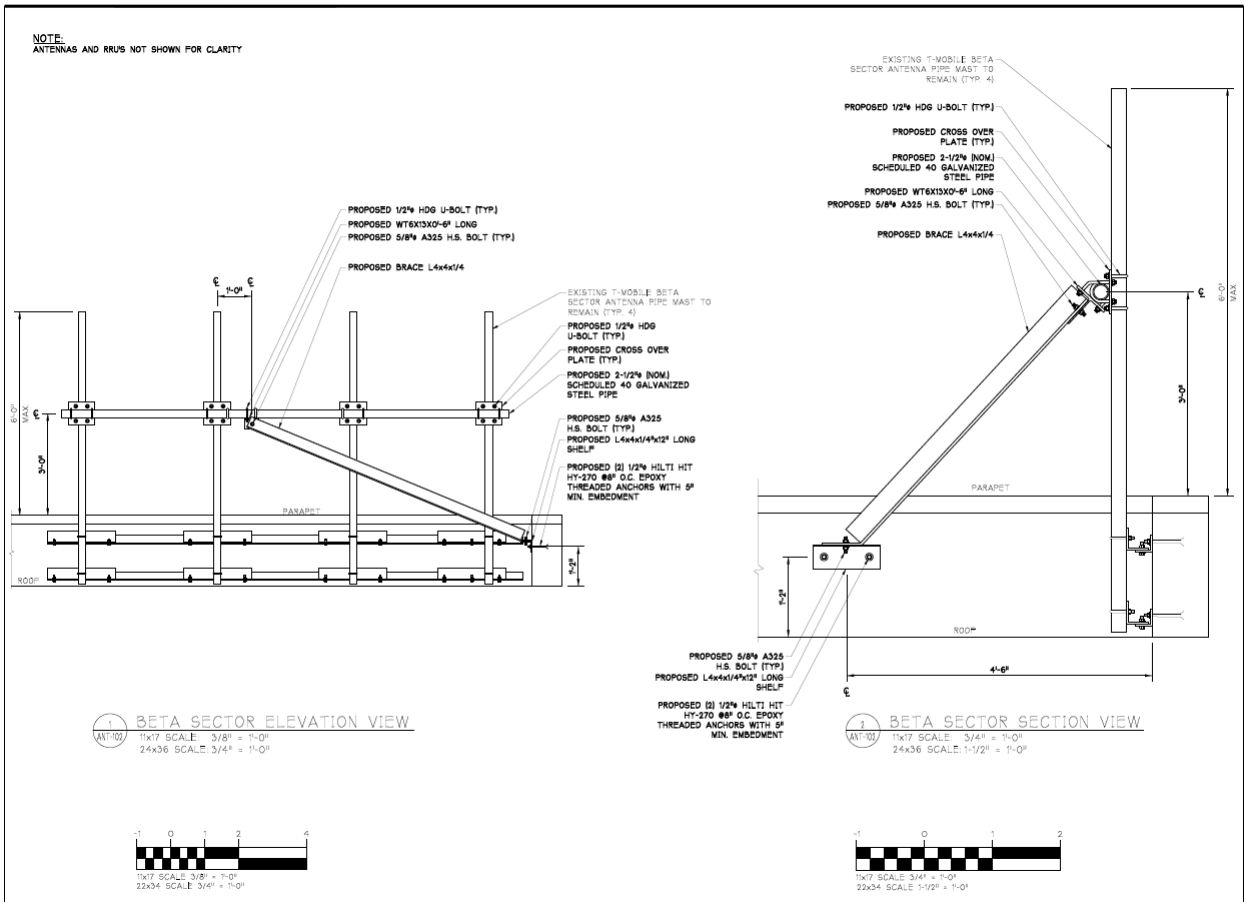
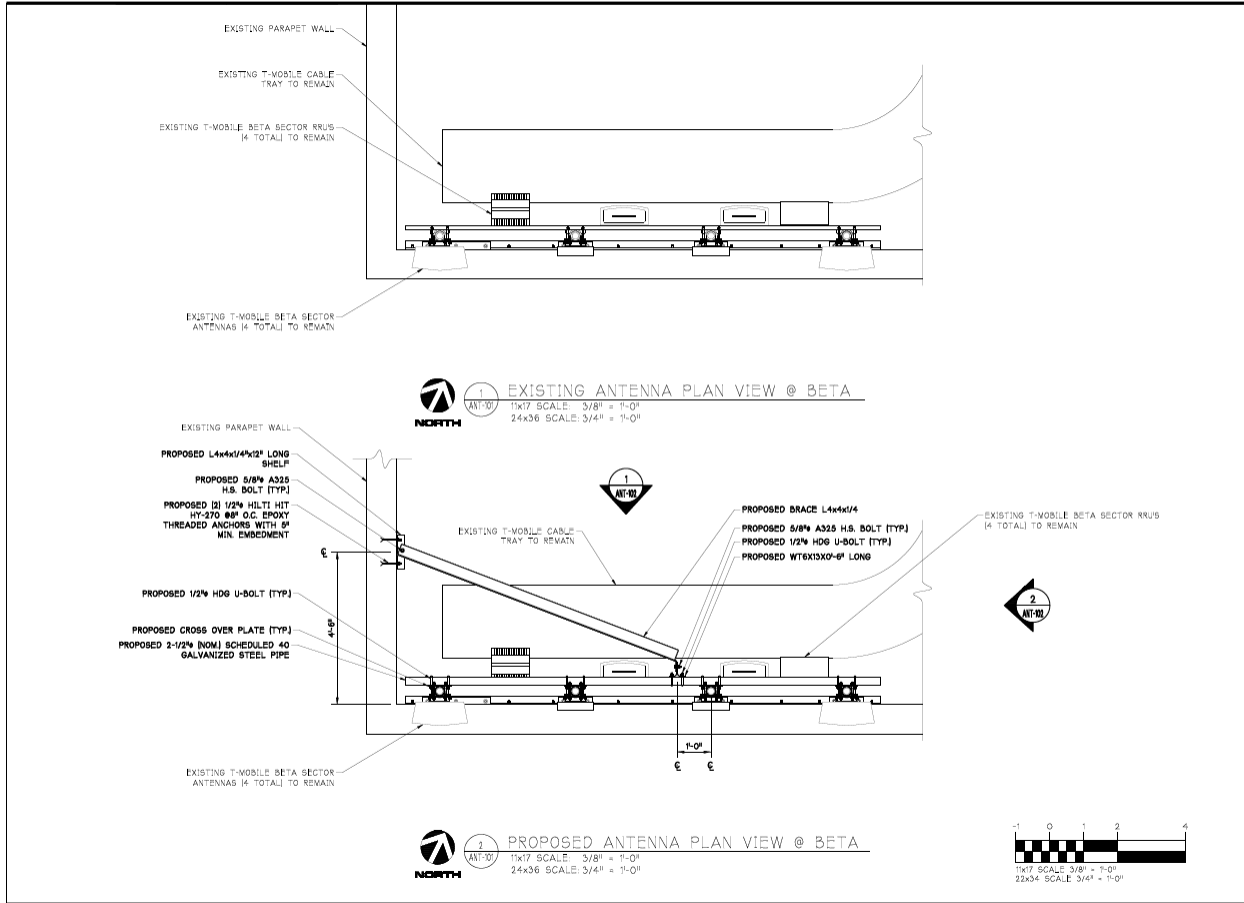




# Tower Example



# Structural Upgrades Example





# Platform Examples

