



Manufacturing Drafting Services



Executive Summary

Cad Designers has been in business since 1999. We have worked as a consultant to many Manufacturing Companies involving a wide range of projects. Drawings are produced to the standards specified by our clients. We have completed work on Electrical, Mechanical, Structural drawings, including Elevations, Floor plans, Line layouts, Power Distribution Networks, Security diagrams, etc. Our goal is not only to meet, but always exceed your expectations.

Philosophy

Our Philosophy is simple: Customer, Time Management and Quality Assurance. Our Customer is the most important. We strive to communicate and provide our customer what they need when they need it. We meet the exacting deadlines that the Manufacturing industry expects. We have the ability to meet the fast pace required for Manufacturing deliverables. All work is completed by our team from our office in Raleigh, North Carolina. As part of our Quality Assurance program, every drawing is reviewed and checked to make sure it matches the template provided by our clients. We expect to have the drawings at 90+% by the time our clients review the drawings. We feel that with our Customer, Time Management and Quality Assurance Philosophy, we can meet or exceed your expectations. It is our goal to give you a final product that meets your objectives on a fast-paced timeline.

Contracting CAD Services

Cad Designers has become one of the leading Cad drafting service companies by providing dependable, professional services at a competitive price. In today's economic climate, contracting your drafting needs is smart business. While many of our larger clients utilize Cad Designers as an overflow solution, our smaller clients tend to use Cad Designers for all of their drafting needs. Outsourcing your drafting to Cad Designers can save your company money by not having to direct hire additional staff at times of economic uncertainty. When the need arises, we can help you complete your project without adding any long-term overhead costs.

Cad Designers Company Information

Company Name:	Cad Designers, Inc.
North Carolina Address:	Cad Designers, Inc. PO Box 91113 Raleigh, NC 27675
Contact:	Charlie Seymour, President
Phone:	919-696-5476
Office Phone:	919-457-9184
Email:	CharlieSeymour@Cad-Designers.com

Cad Designers Manufacturing Drawing Summary

- **Line Layouts**
- **Work Flow Diagrams**
- **Facility Drawings**
- **Security Drawings**
- **Process Drawings**
- **Electrical Drawings**
- **Power Distribution Drawings**
- **Mechanical Drawings**
- **Structural Drawings**
- **Site Plans**
- **Floor Plans**
- **Elevations**
- **Sections**
- **Detail Drawings**
- **Warehouse Drawings**
- **Rack Layouts**
- **Office Layouts**

We take pride in our QA/QC program. We ensure that each project is thoroughly reviewed and correct prior to being delivered to our clients. It is our goal to minimize revisions. This can be done by properly preparing before each project begins. We have an initial kickoff with all of our clients so we may completely understand their goals, objectives and preferred drawing formats. As we complete a few projects for our clients, the revisions are reduced to a minimum. We provide a next business day turnaround for all redlines. It is our goal to give you a final product that meets your objectives on a fast paced timeline.

Our Team

Charlie Seymour, President

Charlie has extensive Drafting and Design experience. Charlie graduated from North Carolina State University with a BS in the Physical Mathematics/Sciences with a concentration in Business Management in December 1992. Charlie has worked for several Engineering Firms in the Carolinas and has extensive knowledge in Wireless Telecom, AV and Security, Electrical/Mechanical, Environmental, Manufacturing and Structural Drafting and Design. Charlie leads the QA/QC program to ensure each client receives a quality product, in a timely manner.

Chris, Senior Cad Designer

Chris has worked in the Manufacturing and Environmental Industries his entire career. Chris graduated from The University of Rochester with a BS in Geomechanics (Geology/Mechanical Engineering) in May of 1989. Chris has worked for several Engineering Consulting Firms along the East Coast and has extensive knowledge in Wireless Telecom, Environmental, and Manufacturing Drafting and Design. Chris has OSHA 40-Hour Hazardous Waste (HAZWOPER) Training Certification and has taken the OSHA 8-Hour Supervisor Course.

Larry, Senior Cad Designer

Larry has worked in the Manufacturing and Environmental Industry his entire career. Larry graduated from Florence-Darlington Technical College with a A.S. Degree in Drafting and Design. Larry has worked for several Engineering Consulting and Manufacturing Firms in North and South Carolina. Larry has extensive knowledge and experience in Mechanical and Structural Drafting.

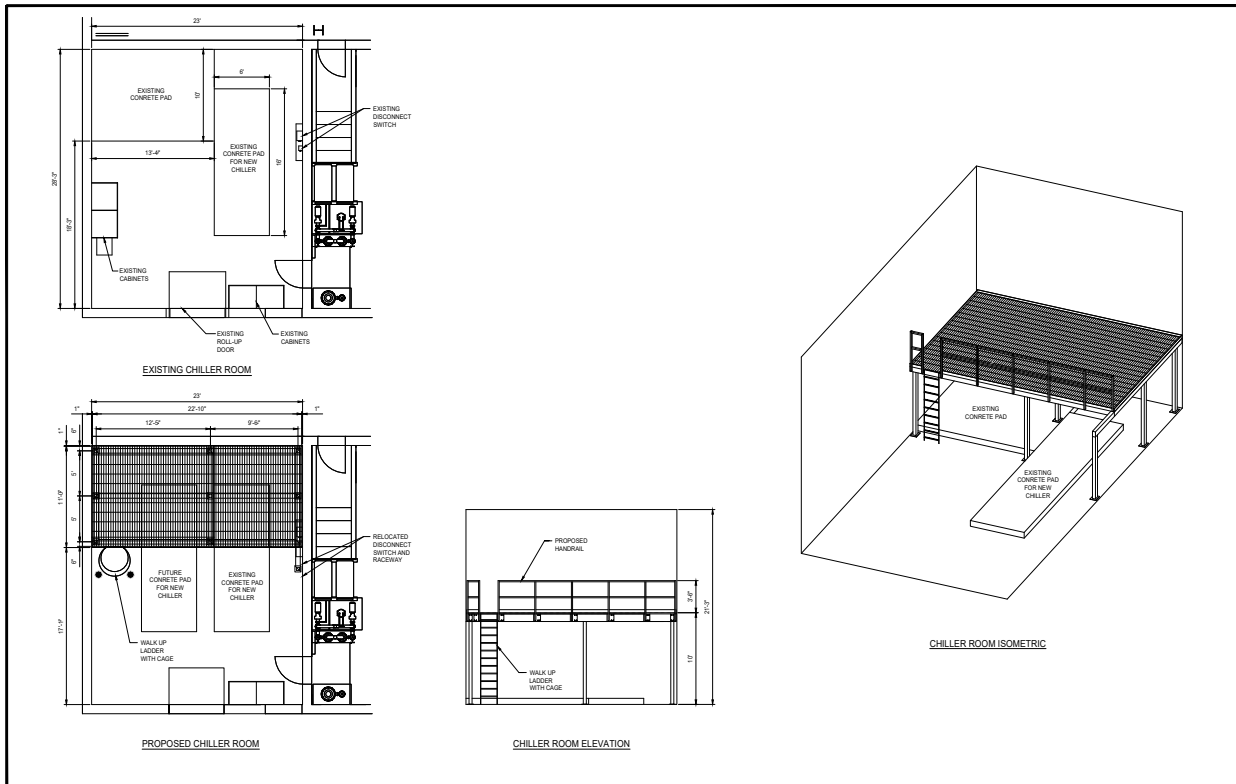
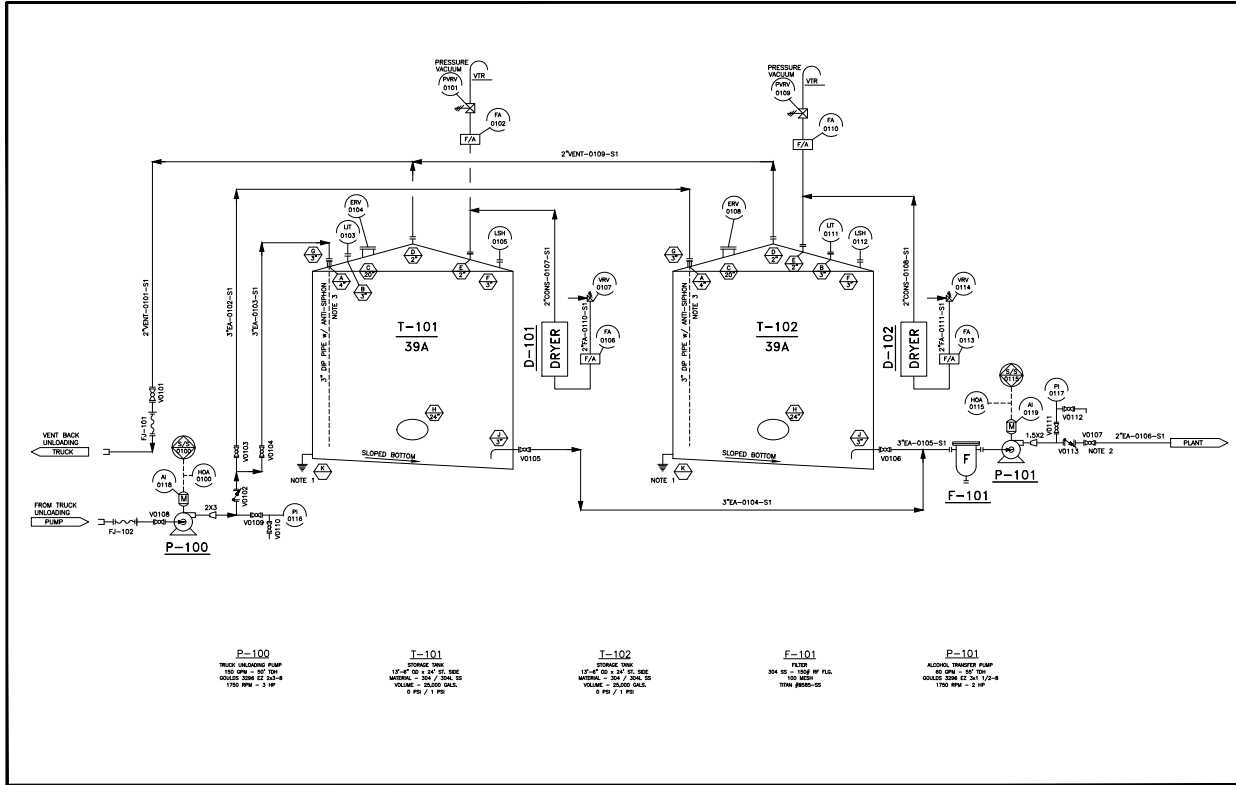
Schafer, Cad Designer

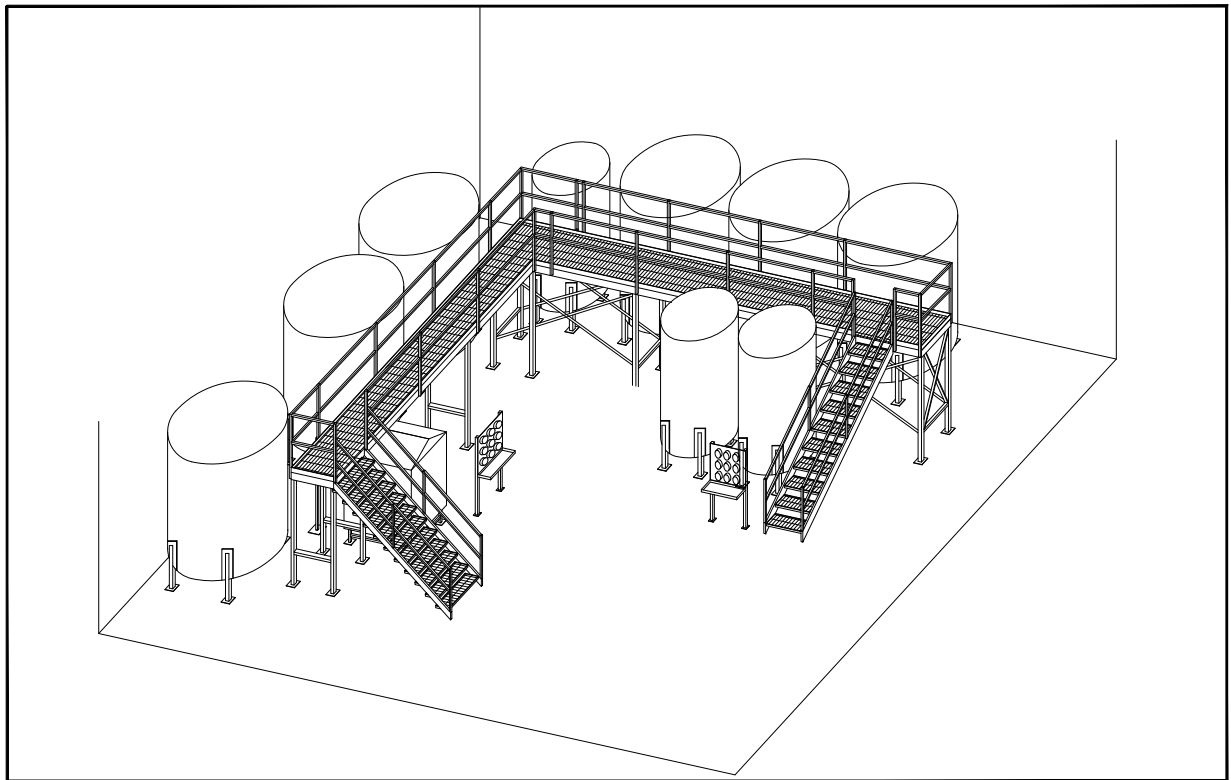
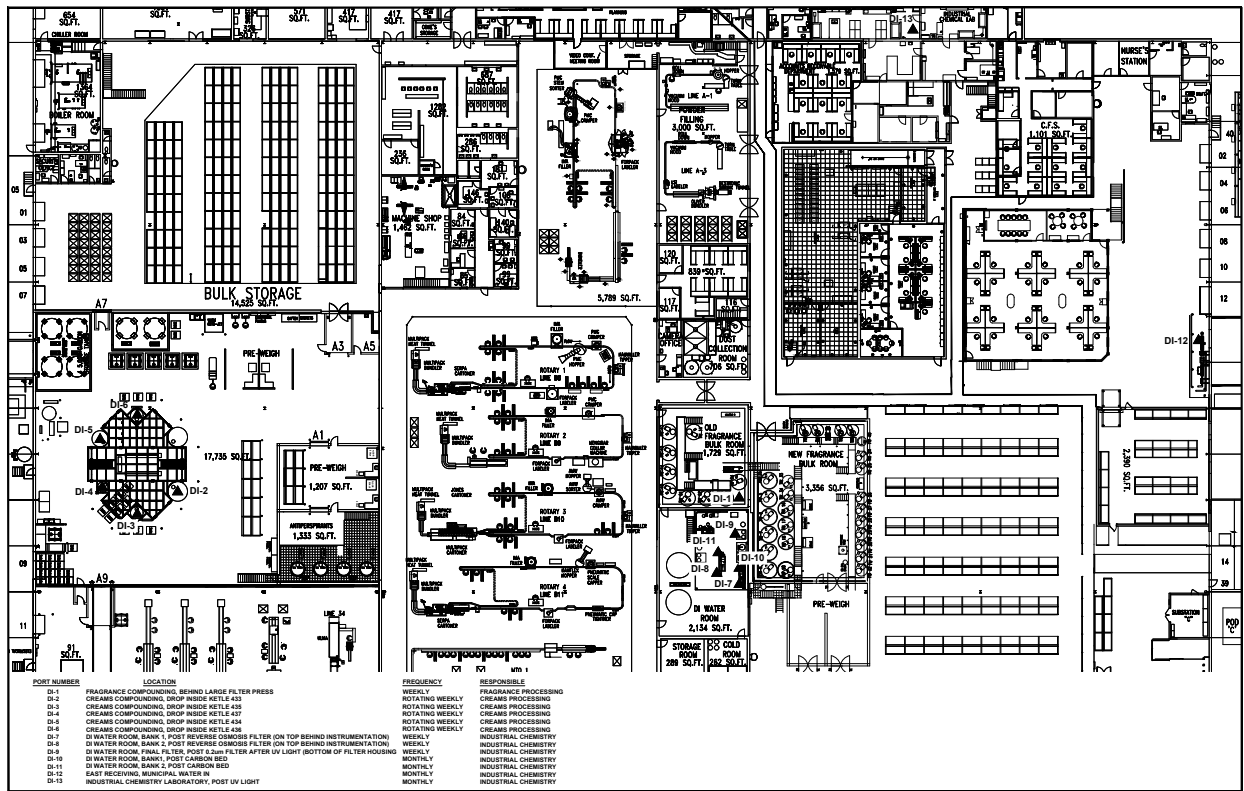
Schafer has Cad Drafting experience in Wireless Telecom, AV and Security and Environmental Drafting. Schafer helps with the completion of redlines and with the QA/QC program. Schafer has MS Office Certification

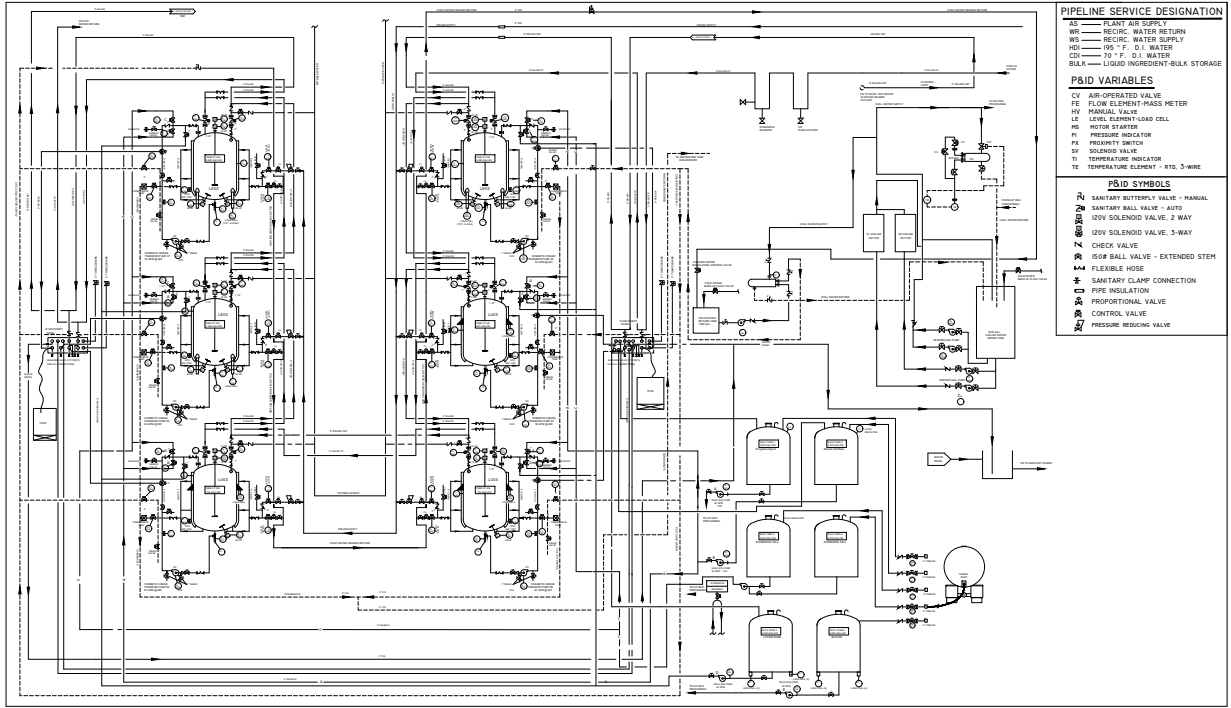
Mitchell, Cad Drafter

Mitchell has Cad Drafting experience in Wireless Telecom, Manufacturing and Environmental Drafting. Mitchell has MS Office Certification and helps with redlines and setting up templates for the team.

Example Drawings







PIPELINE SERVICE DESIGNATION

- AS — PLANT AIR SUPPLY
- WR — RECIRC. WATER RETURN
- WS — RECIRC. WATER SUPPLY
- HDI — H.P. F. D.I. WATER
- CDI — C.D. F. D.I. WATER
- BULK — LIQUID INGREDIENT-BULK STORAGE

P&ID VARIABLES

- CV — AIR-OPERATED VALVE
- FE — FLOW ELEMENT-MASS METER
- HV — MANUAL VALVE
- LE — LEAK DETECT-LOP CELL
- MS — MOTOR STARTER
- PI — PRESSURE INDICATOR
- PS — PRESSURE SWITCH
- SV — SOLENOID VALVE
- TI — TEMPERATURE INDICATOR
- TE — TEMPERATURE ELEMENT - RTD, 3-WIRE

P&ID SYMBOLS

- RV — SANITARY BUTTERFLY VALVE - MANUAL
- SBV — SANITARY BALL VALVE - AUTO
- ISV — 120V SOLENOID VALVE, 2-WAY
- ISV3 — 120V SOLENOID VALVE, 3-WAY
- CV — CHECK VALVE
- ISOP — ISOP BALL VALVE - EXTENDED STEEL
- FMH — FLEXIBLE HOSE
- SC — SANITARY CLAMP CONNECTION
- PI — PIPE INSULATION
- PRO — PROPORTIONAL VALVE
- CON — CONTROL VALVE
- PRV — PRESSURE REDUCING VALVE

